




 4 bedrooms

 3 bathrooms

 Double Garage

 215 Sq M

## MONTE

The property features everything you need for comfortable living. Interior spaces have been carefully planned to maximize living space, Whilst connecting seamlessly to the outdoors.

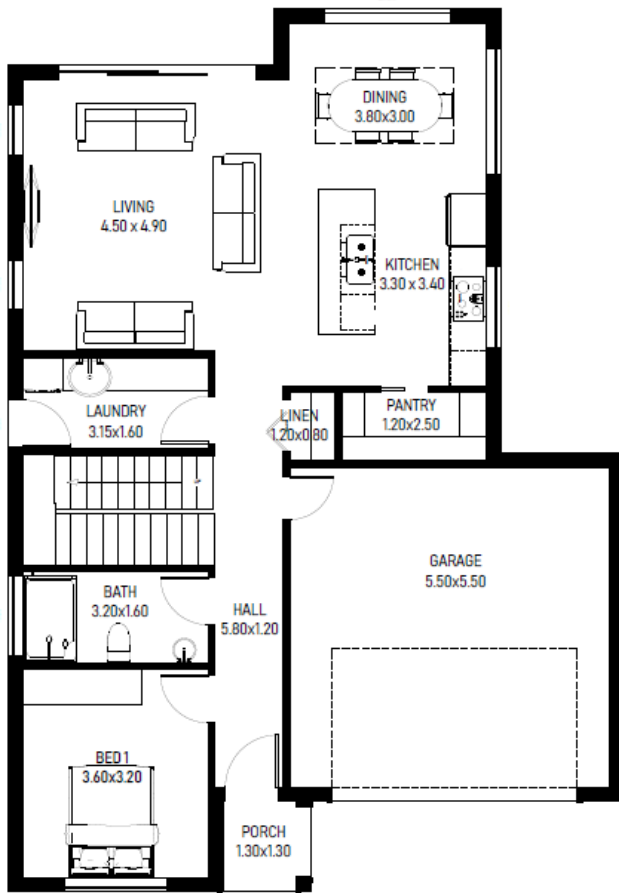


## KEY FACTS

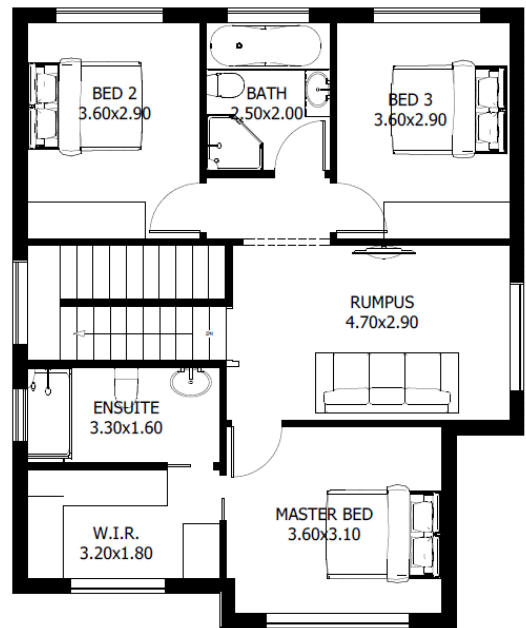
- ✓ Double storey
- ✓ 4 bedrooms
- ✓ 3 bathrooms
- ✓ Double Garage
- ✓ 215 Sq M
- ✓ Exterior width 10.50m
- ✓ Exterior length 15.30m

**FLOOR AREAS**

Ground Floor	133 sqm
First floor	82 sqm
<b>Total Floor Area</b>	<b>215 sqm</b>



Ground floor



First floor

